

# Cable Accessories for Microinverter of HMS Series



## AC Trunk Cable, 12/10 AWG Cable

AC Trunk Cable is used to connect the microinverter to distribution box.

The Trunk Connector on the AC Trunk Cable is evenly distributed at intervals, Hoymiles provides AC Trunk Cable with different AC Trunk Connector spacing.



## AC Trunk Connector

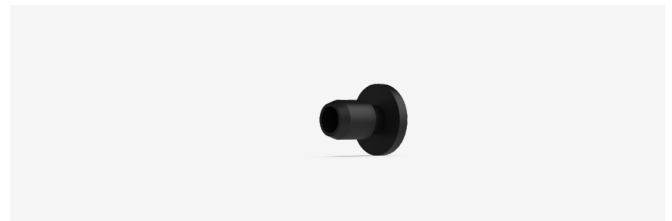
The AC Sub Connector of the microinverter can be inserted into the port of the AC Trunk Connector.

Plug and play connectors speed up and simplify installation.



## AC Trunk Port Cap

Used to protect vacant AC Trunk Port.



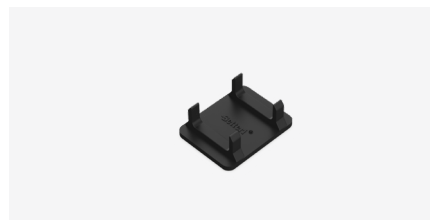
## AC Trunk End Cap

Used to protect the cable port of AC Trunk Connector at the end of the AC branch.



## AC Trunk Port Disconnect Tool

Used to disconnect the connection between the microinverter and the AC Trunk Connector.



## AC Trunk Connector Unlock Tool

Used to unlock the AC Trunk Connector upper cover so that the cable can be removed, replaced, and the AC Trunk End Cap installed.



## DC Extension Cable

Connect the microinverter and the PV module when the distance between this two exceeds the original cable length.

# Technical Specifications

Model	AC Trunk Cable	
<b>Main Parameters</b>		
Cable type	10AWG	12AWG
Rated voltage	600V	
Cable outer diameter	12.5±0.40mm	11.1±0.30mm
Ambient temperature range	-40°C~+90°C	
AC Trunk Connector spacing	4.2m/2m	1m
Number of AC Trunk Connectors per Single AC Trunk Cable	10/20	40
Single AC Trunk Cable length	39.3m/41m	46 m
<b>Compliance</b>		
Product standard	UL44 UL1277 UL1581	
RoHS compliant	Yes	

Model	AC Trunk Connector	
<b>Main Parameters</b>		
Pin number	2P+PE	
Rated current	32A ( Use 10AWG/6mm <sup>2</sup> copper cable)	
Rated voltage	300V	
Contact resistance	≤5 mΩ	
Power frequency withstand voltage	1500V AC	
Over voltage type	III	
<b>Connection Parameter</b>		
Applicable cable specification	12/10 AWG	
Applicable cable outer diameter	10~13mm	
Cable connection type	Screw pressing	
Sub connector connection type	Crimping	
<b>Mechanical Data</b>		
Ambient temperature range	-40°C~+85°C	
Dimensions(L×W×H mm)	150*40*110	
Protection rating	IP68	
Flame resistance degree	UL94-V0	
<b>Compliance</b>		
Product standard	PPP 59015A:2013 ANSI/UL 6703-2017	
RoHS compliant	Yes	

Model	DC Extension Cable	
<b>Cable</b>		
Cable type	PV1-F 1X4	
Rated current	20A	
Rated voltage	Max.1800V DC	
Cable length	1m	
Ambient temperature range	-40°C ~ +90°C	
Product standard	2 PFG 1169/08.2007	
<b>DC Connector</b>		
Manufacturer	Betteri	Staubli
Type	BC03A, BC03B	PV-KBT4/6II-UR
Rated current	30A	39A(TUV), 30A(UL)
Rated voltage	1000V DC(TUV), 600/1000V DC(CSA)	1000V DC(TUV), 1500V DC(UL)
Rated impulse withstand voltage	6000V	12000V
Over voltage category	III	
Ambient temperature range	-40°C~+85°C	-40°C ~ +85°C(TUV), -40°C ~ +75°C(UL)
Protection rating	IP67	IP68
Flame resistance degree	UL94-V0	
Product standard	EN 62852:2014 UL6703	EN 62852 UL6703 2PFG2330 CNCA/CTS0002-2012
RoHS compliant	Yes	

## Ordering Information

### AC (Single Phase Trunk) Accessories

Type	Model	Description
AC Trunk Cable	AC Trunk Cable_40T_40L_12AWG-1m	40 AC Trunks and 40 AC Cables (Per Cable Length 1m, 12AWG)
	AC Trunk Cable_20T_20L_10AWG-2m	20 AC Trunks and 20 AC Cables (Per Cable Length 2m, 10AWG)
	AC Trunk Cable_10T_10L_10AWG-4.2m	10 AC Trunks and 10 AC Cables (Per Cable Length 4.2m, 10AWG)
AC Trunk Port Disconnect Tool	AC Trunk Port Disconnect Tool	1 AC Trunk Port Disconnect Tool
AC Trunk Port Cap	AC Trunk Port Cap	1 AC Trunk Port Cap
AC Trunk Connector Unlock Tool	AC Trunk Connector Unlock Tool	1 AC Trunk Connector Unlock Tool
AC Trunk End Cap	AC Trunk End Cap	1 AC Trunk End Cap

### DC Accessories

Type	Model	Description
DC Connector-F	BC03A-F-C24	1 DC Female Connector (Betteri)
DC Connector-M	BC03A-M-C24	1 DC Male Connector (Betteri)
DC Connector Unlock Tool	MC4_Con_Unlock	1 DC Connector Disconnect Tool
DC Extension Cable	DC_Ext_Cable-1m	1 DC Male Connector (Betteri), 1 DC Cable (Cable Length 1m, 12AWG) and 1 DC Female Connector (Betteri)
	Stau_DC_Ext_Cable-1m	1 DC Male Connector (Staubli), 1 DC Cable (Cable Length 1m, 12AWG) and 1 DC Female Connector (Staubli)